

## Shayesteh Jahanfar, PhD



Associate Professor, of Public Health and Community Medicine  
Tufts University School of Medicine

**Director of Tufts University, Affiliate of Cochrane US**  
**Co-director of Cochrane Pregnancy Childbirth US Sattelite**  
[Shayesteh.Jahanfar@tufts.edu](mailto:Shayesteh.Jahanfar@tufts.edu)

Dr. Jahanfar is an international Cochrane trainer and has conducted over 26 Cochrane workshops/webinar series in the USA, Canada, Malaysia, Middle East on standard author training and trained over 400 clinicians and scientists. She established Tufts University, Affiliate of Cochrane US in April 2021 and is a founder and Co-Director of Cochrane Pregnancy Childbirth US Satellite. She has published more than 20 Cochrane and non-reviews and is now acting as the Cochrane Mentor for the Cochrane Us Network Mentoring Program.

## David Haas, MD, MS



Professor of Obstetrics & Gynecology  
**Co-director of Cochrane Pregnancy Childbirth US Satellite**  
[dahaas@iu.edu](mailto:dahaas@iu.edu)

Originally from St. Louis, Dr. Haas completed his OB/GYN Residency in the U.S. Navy in San Diego. After practicing for 4 years in North Carolina, he came to IU in 2005 and has built the OBGYN Department obstetric research program. He enjoys all three missions of IUSM- clinical care/service, teaching, and research.

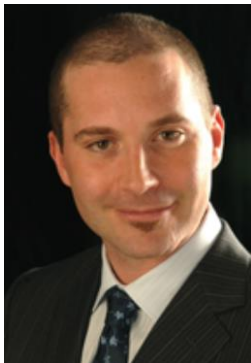
## Donal O'Mathuna, B.Sc.(Pharm), MA, PhD



Associate Professor, The Ohio State University  
College of Nursing  
[omathuna.6@osu.edu](mailto:omathuna.6@osu.edu)

Dónal O'Mathúna, PhD, is Associate Professor in the College of Nursing and Center for Bioethics at The Ohio State University. He is also the Director of the Cochrane Affiliate at OSU's Helene Fuld Institute for Evidence-based Practice and a member of the Executive Committee of the Cochrane US Network. He has authored and conducted training on systematic reviews with Cochrane for over twenty years

## Joel Gagnier, PhD



Professor University of Michigan  
**Member of Cochrane Method Group**  
[jgagnier@med.umich.edu](mailto:jgagnier@med.umich.edu)

Joel J. Gagnier is a Clinical Epidemiologist and Associate Professor in the Departments of Orthopedic Surgery and Epidemiology at the University of Michigan. Dr Gagnier's research program focuses on clinical and methodological research related to musculoskeletal conditions and clinical care. Dr Gagnier is a member of the CONSORT Group, the Cochrane Collaboration Musculoskeletal Group, Back Review Group, Bias Methods Group, an editor and editorial board member of several peer-reviewed scientific journals, and a board member of several research societies. He has published over 140 peer-

reviewed papers, several book chapters and given over 300 lectures and workshops at local, national and international scientific meetings.

## Isha Taneja MBBS, MPH



**Cochrane Fellow** Tufts University, Affiliate of Cochrane US

Isha Taneja MBBS, MPH, Cochrane Fellow Tufts University, Affiliate of Cochrane US, holds a Bachelor of Medicine & Bachelor of Surgery from Rajasthan university of health sciences (India) and is a candidate for a master's in public health (Epidemiology and Biostatistics) at Tufts University School of Medicine. Her ongoing Practicum at Massachusetts General Hospital, Division of Allergy and Immunology focuses on the gaps and knowledge of Pediatricians regarding NIAID addendum guidelines for early introduction of the peanut. She had both clinical and research experience. After completing medical school, she worked as a Medical officer in the Department of Obstetrics and Gynecology at Gian Sagar Medical College, India. She also worked as a research assistant at Detroit Medical Center, Michigan, on various projects. Her research interests include maternal & child health and chronic diseases.

## Tiffany Duque



Cochrane US Network Senior Officer

Tiffany is the Cochrane US Network Senior Officer. She brings to this role 20 years of experience in global and US public health, mostly in the areas of research, program design and implementation, program management, and partnerships. Her technical focus area is

global nutrition, specifically maternal and child nutrition in vulnerable populations, though over the years I have worked with most population groups and in many countries. Her US-based work has been with the Centers for Disease Control and Prevention, Emory University, and the Department of Public Health for the city of Atlanta. Internationally, I have worked with WHO, UNICEF, Ministries of Health in Colombia and Mexico, and a number of NGOs. She currently reside in the Los Angeles area with my husband and two school-aged children.